



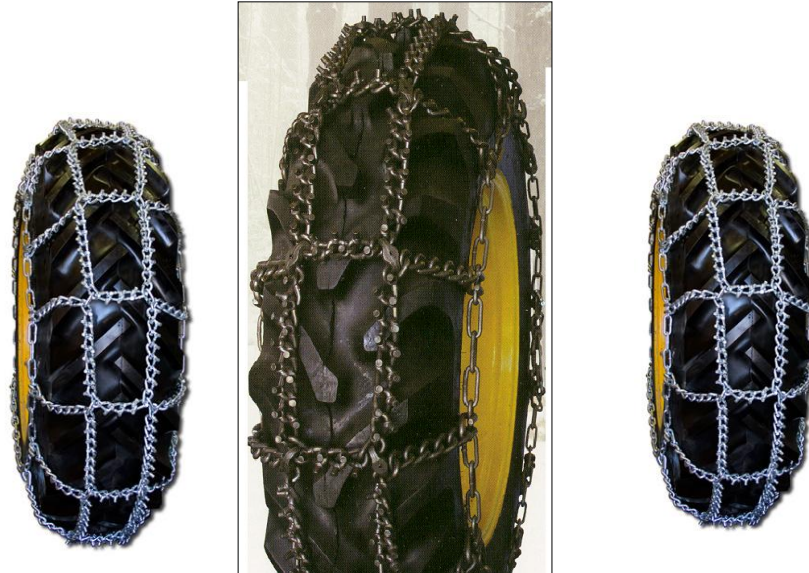
INTERNATIONAL CHAIN & CABLE

TRU GRIP CHAINS

TRU GRIP farm tractor and industrial tire chains are designed to prevent the cross chains from dropping between the lugs of the tire tread by adding an interconnected adjacent cross chain.

Note: Product not in stock is subject to freight charges.

PART NO.	TIRE SIZE				CROSS CHAINS PER HALF PAIR	WEIGHT PER PAIR	LIST PRICE FRT EXTRA
TRU214	11.2-16 13.50-16.1	11.2-24 9.5-24	9.5-28		7	104 lbs.	\$ 433.00
TRU218	11-28	10-32	9.5-36		9	138 lbs,	\$ 575.00
	12.4-28	11.2-32	9.5-38				
TRU226	355/80-20	11.2-28	9.5-32		8	118 lbs.	\$ 492.00
TRU229	12.4-24				8	124 lbs,	\$ 516.00
TRU240	41x14.00-20 13.6x24	14.9-24 420/70-24	13.6-36		8	132 lbs.	\$ 551.00
	13.00-24	13.6-28	13.9-36				
TRU242	12-28	320/85-34			9	149 lbs.	\$ 619.00
TRU246	13485	13.6-36	13.6-38		10	161 lbs.	\$ 670.00
TRU250	14.9-26				9	149 lbs.	\$ 622.00
TRU252	14.9-28	14.9-30			10	164 lbs.	\$ 683.00
TRU260	16.9-24				9	164 lbs.	\$ 682.00
TRU262	16.9-26	16.9-28			9	160 lbs.	\$ 666.00
TRU266	16.9-30	16.9-32	14.9-38	15.5-38	10	177 lbs.	\$ 738.00
TRU268	18.4-24	19.5L-24	17.5-25	18.4-26	8	160 lbs.	\$ 668.00
TRU270	16.9-34	320/90-46			11	194 lbs.	\$ 809.00
TRU271	18.4-28	18.4-30	480/80-30		9	180 lbs.	\$ 749.00
TRU272	20.8-34	16.9-38	18.4-38		11	219 lbs.	\$ 908.00
TRU273	18.4-34				10	199 lbs.	\$ 830.00
TRU275	21L-24				7	150 lbs	\$ 830.00
TRU276	20.8-38				12	254 lbs	\$ 1,057.00
TRU277	18.4-42	18.4-46			12	268 lbs	\$ 1,116.00



INTERNATIONAL CHAIN & CABLE

TALON STUDDED CHAIN

The Talon Tractor Studded chain are manufactured from specially designed alloy steel, case hardened for added durability. Robotically fused double studs provide the ultimate in on-road and off-road traction. Talon chains feature easy to use boomer style side chain

Note: Product not in stock is subject to freight charges.

PART NO.	TIRE SIZE			CHAIN SIZE	WEIGHT PER PAIR	LIST PRICE FRT EXTRA
8324AST	8.3-24			10 MM	125 lbs	\$ 821.00
9516AST	9.5-16			10 MM	111 lbs	\$ 735.00
9524AST	9.5-24			10 MM	137 lbs	\$ 902.00
10165AST	10-16.5			10 MM	99 lbs	\$ 654.00
11224AST	11.2-24			10 MM	145 lbs	\$ 954.00
11228AST	11.2-28	12.4-24		10 MM	158 lbs	\$ 1,045.00
11234AST	11.2-34	11.2-36		10 MM	195 lbs	\$ 1,287.00
12165AST	12-16.5			10 MM	116 lbs	\$ 768.00
12416AST	12.4-16			10 MM	130 lbs	\$ 859.00
12428AST	12.4-28	13.6-24		10 MM	175 lbs.	\$ 1,152.00
12436AST	12.4-36	12.4-38		10 MM	215 lbs	\$ 1,415.00
13628AST	13.6-28			10 MM	188 lbs	\$ 1,241.00
13638AST	13.6-38			10 MM	222 lbs.	\$ 1,462.00
14175AST	12.5/80-18	14-17.5		10MM	163 lbs	\$ 917.00
14924AST	14.9-24			10 MM	181 lbs.	\$ 1,192.00
14926AST	14.9-26	14.9-28		10 MM	195 lbs.	\$ 1,283.00
14938AST	14.9-38	15.5-38		10 MM	237 lbs	\$ 1,347.00
15195AST	15.19-5			10MM	153 lbs	\$ 1,005.00
16924AST	16.9-24	17.5-24		10 MM	200 lbs.	\$ 1,322.00
16928AST	16.9-28	17.5-25	16.9-30	10 MM	216 lbs.	\$ 1,425.00



Note: Product not in stock is subject to freight charges.

INTERNATIONAL CHAIN & CABLE

TALON STUDDED CHAIN

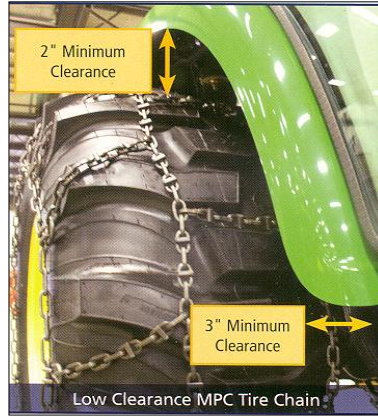
The Talon Tractor Studded chain are manufactured from specially designed alloy steel, case hardened for added durability. Robotically fused double studs provide the ultimate in on-road and off-road traction. Talon chains feature easy to use boomer style side chain fasteners and heavy duty cross chain hooks.

PART NO.	TIRE SIZE		CHAIN SIZE	WEIGHT PER PAIR	LIST PRICE FRT EXTRA
16930AST	16.9-30		10 MM	216 lbs.	\$ 1,485.00
16934AST	16.9-34	18.4-30	10 MM	236 lbs.	\$ 1,558.00
16938AST	16.9-38	18.4-34	10 MM	252 lbs.	\$ 1,659.00
18426AST	18.4-26	18.4-28	10 MM	222 lbs	\$ 1,696.00
18438AST	18.4-38		10 MM	266 lbs.	\$ 1,659.00
18442AST	18.4-42		10 MM	281 lbs	\$ 1,462.00
20838AST	20.8-38		10 MM	295 lbs	\$ 1,944.00
431620AST	43.1-62		10 MM	205 lbs	\$ 1,065.00
10PC	Plug Coupling				\$ 12.00

PRICES ARE FOB FACTORY - CALL FOR FREIGHT RATE

www.wallingfords.com

CHAINS



INTERNATIONAL CHAIN & CABLE

AQUILINE® MULTI-PURPOSE CHAIN (MPC)- provide excellent traction when clearance is an issue. Great for use with compact tractors, skid steers, and agricultural applications. These are aggressive, yet won't damage asphalt when used for snow removal. Manufactured from hardened alloy steel in a square link design with wear bars. These chains are durable and light, and won't fall between tire lugs.

Note: Product not in stock is subject to freight charges.

PART NO.	TIRE SIZE			CHAIN SIZE	WEIGHT PER PAIR	LIST PRICE FRT EXTRA
9524AMPC	9.5-24			5.5 MM	61lbs	\$ 617.00
10165AMPC	10.00-16.5			5.5 MM	50 lbs	\$ 499.00
1116AMPC	11.00-16	12.5/80-18	11.2-20	5.5 MM	59 lbs	\$ 693.00
11224AMPC	11.2-24			5.5 MM	68 lbs	\$ 795.00
12165AMPC	12-16.5			5.5 MM	54 lbs	\$ 627.00
12416AMPC	12.4-16			5.5 MM	55 lbs	\$ 673.00
12424AMPC	12.4-24			5.5 MM	71 lbs	\$ 828.00
1324AMPC	13.00-24	13.00-25	13.6-28	5.5 MM	86 lbs	\$ 1,008.00
13616AMPC	13.6-16			5.5 MM	66 lbs	\$ 770.00
13624AMPC	13.6-24			5.5 MM	80 lbs	\$ 935.00
14175AMPC	14-17.5			5.5 MM	62 lbs	\$ 724.00
1420AMPC	14.00-20	14.9-24	15.5-25	5.5 MM	83 lbs	\$ 976.00
1424AMPC	14.00-24	14.00-25	14.9-28	5.5 MM	91 lbs	\$ 1,070.00
14926AMPC	14.9-26			5.5 MM	87 lbs	\$ 1,016.00
15195AMPC	15-19.5			5.5 MM	65 lbs	\$ 759.00
16924AMPC	16.9-24			5.5 MM	90 lbs	\$ 1,055.00
16928AMPC	16.9-28			5.5 MM	96 lbs	\$ 1,127.00
17524AMPC	17.5-24			5.5 MM	86 lbs	\$ 1,010.00
431620AMPC	43/16.00X20			5.5 MM	74 lbs	\$ 865.00
4457024AMPC	445/70-24	460/65-24	420/70-24	5.5 MM	82 lbs	\$ 962.00

PRICES ARE FOB FACTORY - CALL FOR FREIGHT RATE